



SERIE

**ST**

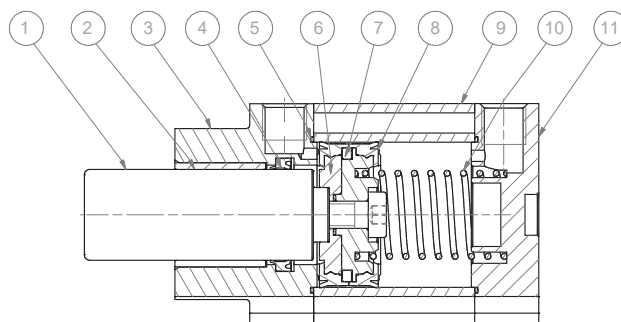
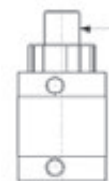
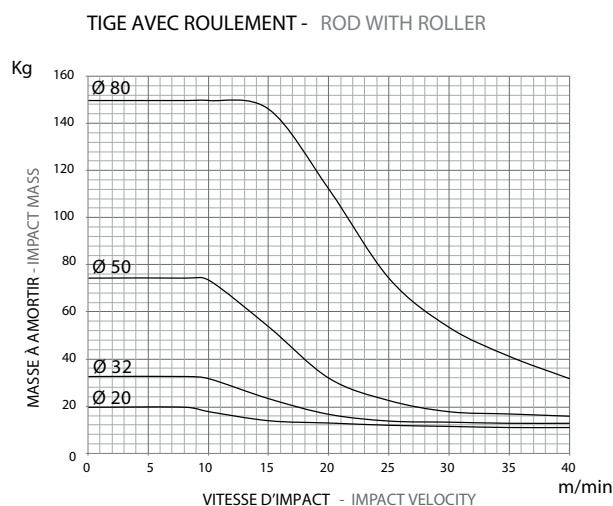
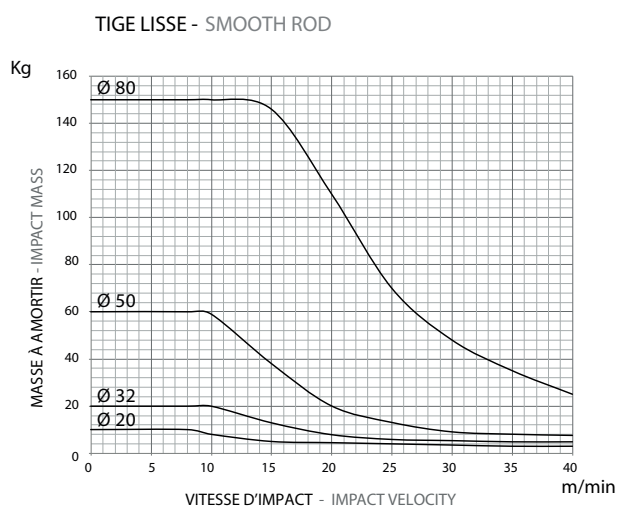
**VERIN STOPPEUR**  
**STOPPER CYLINDER**

**CARACTÉRISTIQUES TECHNIQUES - TECHNICAL CHARACTERISTICS**

Pression de fonctionnement Working pressure	2 ÷ 10 bar (simple effet - single acting )
Plage de température Working temperature	0 ÷ +80 °C (-20 °C avec air sec - with dry air )
Version - Versions	simple effet à ressort arrière - single acting rear spring
Alesage - Bores	Ø 20 - 32 - 50 - 80
Course - Strokes	15 - 20 - 30
Fluides - Fluids	air comprimé, filtré, sans lubrification - compressed air, filtered, no lubrication

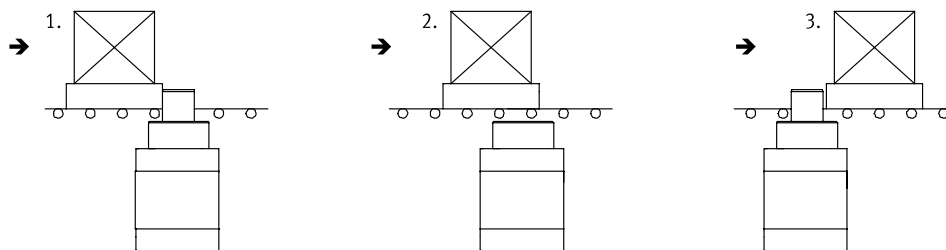
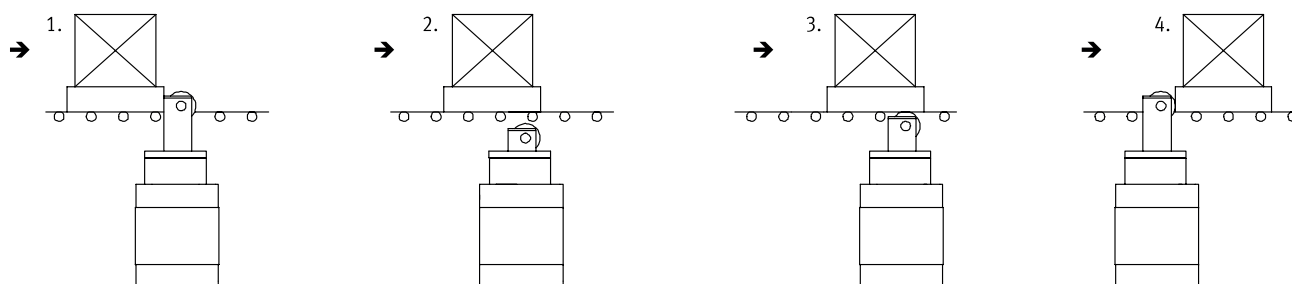
**CARACTÉRISTIQUES DE CONSTRUCTION - CONSTRUCTIVE CHARACTERISTICS**

①	Tige - Rod	acier inoxydable chromé - chromed stainless steel
②	Douille - Bush	acier + PTFE - steel + PTFE
③ ⑪	Protections - Covers	aluminium anodisé - anodized aluminium
④ ⑧	Joints - Seals	polyuréthane - polyurethane
⑤	O-ring	NBR
⑥	Piston	aluminium - aluminium
⑦	Aimant - Magnet	plastroferrite
⑨	Tube	aluminium anodisé - anodized aluminium
⑩	Ressort - Spring	acier - steel
	Vis - Screws	acier zingué - zinc coated steel
	Amortisseur - Bumper	polyuréthane - polyurethane


**DIAGRAMME DE CHARGES ADMISSIBLES**
**APPLICABLE LOAD**


**CODIFICATION**
**KEY CODE**

		<b>P S T 0 5 0 . 0 3 0 . G S . L</b>			
		ALESAGE - BORE (Ø)		COURSE - STROKE (mm)	
		020		015	
		032		020	
		050- 080		030	
		VERSION - VERSION		JOINTS - SEALS	
		ST STOPPEUR simple effet magnétique avec ressort arrière magnetic single acting STOPPER with rear spring		GS joints standards standard seals	
		SÉRIE - SERIES			
ISO 21287	P	tube profilé avec emplacements pour détecteurs tube with slots for sensors			
UNITOP	A	tube profilé avec emplacements pour détecteurs tube with slots for sensors			
				TIGE - ROD	
				L lisse smooth	
				R avec roulement with roller	

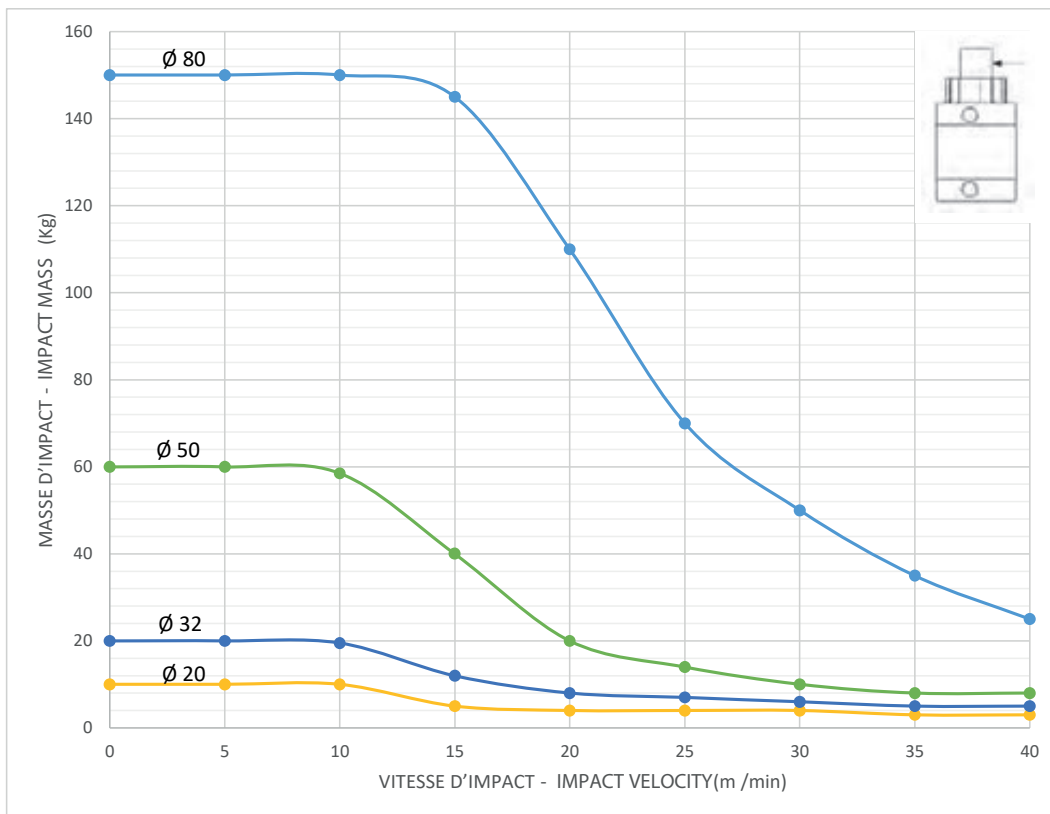
**SCHÉMA DE FONCTIONNEMENT**
**DIAGRAM OF OPERATION**
**TIGE LISSE - SMOOTH ROD**

**TIGE AVEC ROULEMENT - ROD WITH ROLLER**

**FORCE THÉORIQUE DU RESSORT**
**SPRING THEORETICAL FORCE**

		Ø	020	032	050	080
AST	PST	CHARGE MAX - MAX LOAD	[N] 36	51	78	187
		CHARGE MIN - MIN LOAD	[N] 28	36	49	133

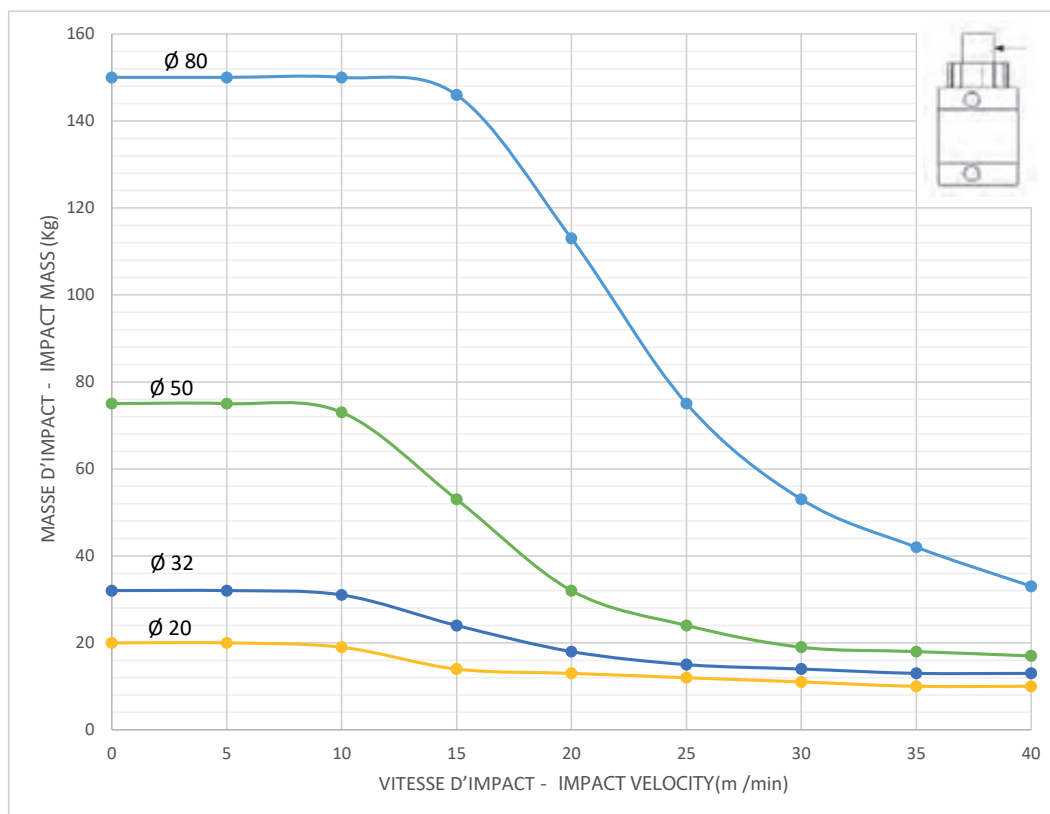
**DIAGRAMME DE CHARGES ADMISSIBLES**

**ALLOWABLE LOAD**

TIGE LISSE - SMOOTH ROD



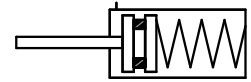
TIGE AVEC ROULEMENT - ROD WITH ROLLER



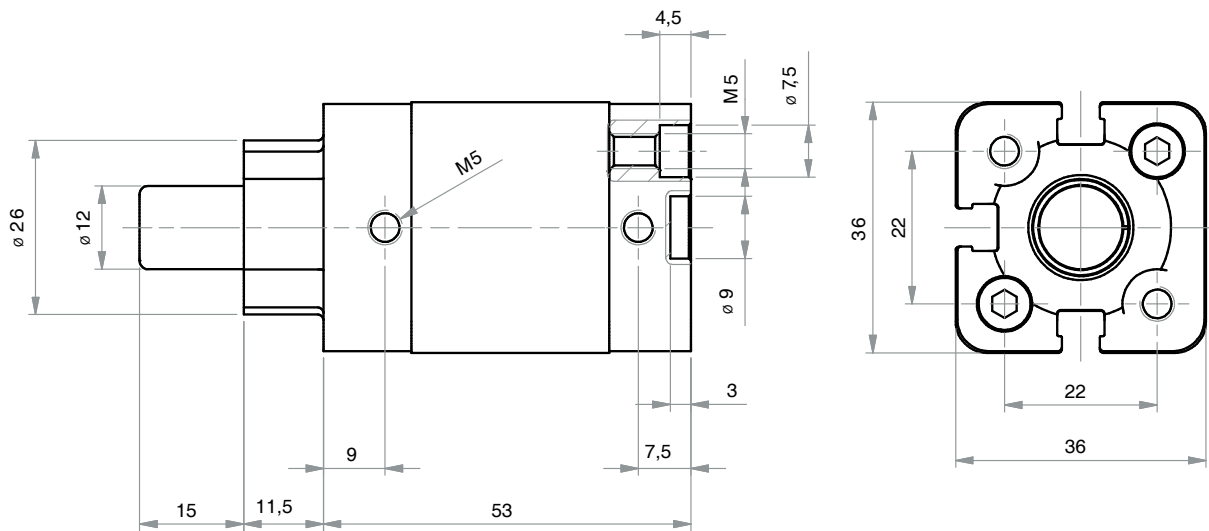
**PST-L**

TIGE LISSE

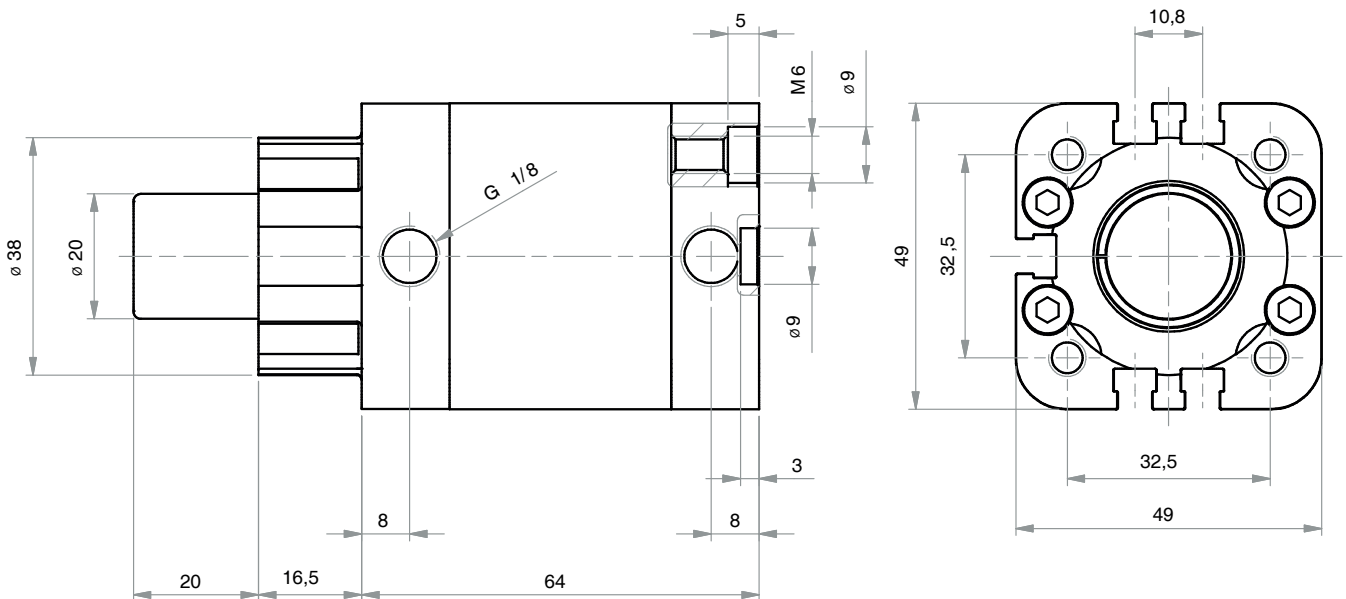
SMOOTH ROD



PST020-015-GSL



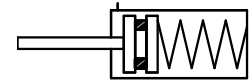
PST032-020-GSL



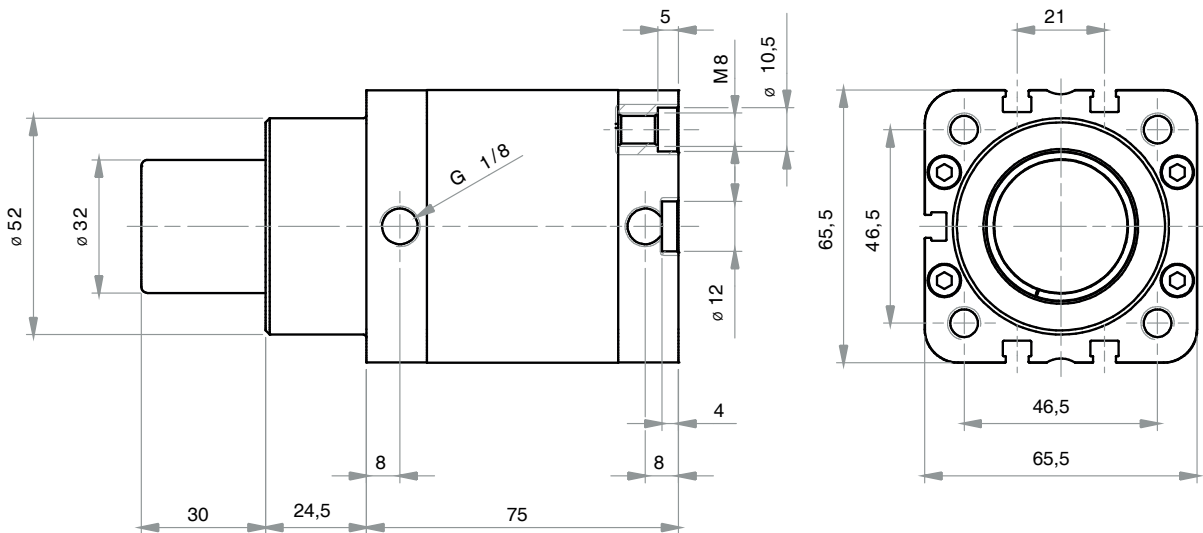
TIGE LISSE

PST-L

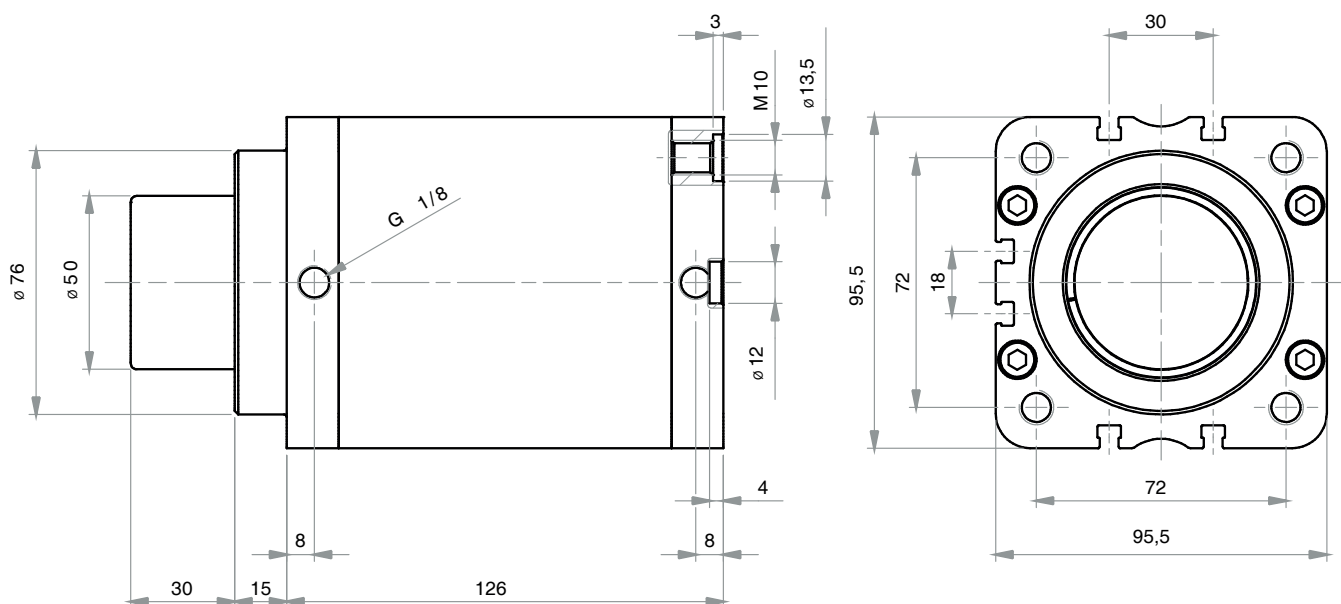
SMOOTH ROD



PST050-030-GSL



PST080-030-GSL



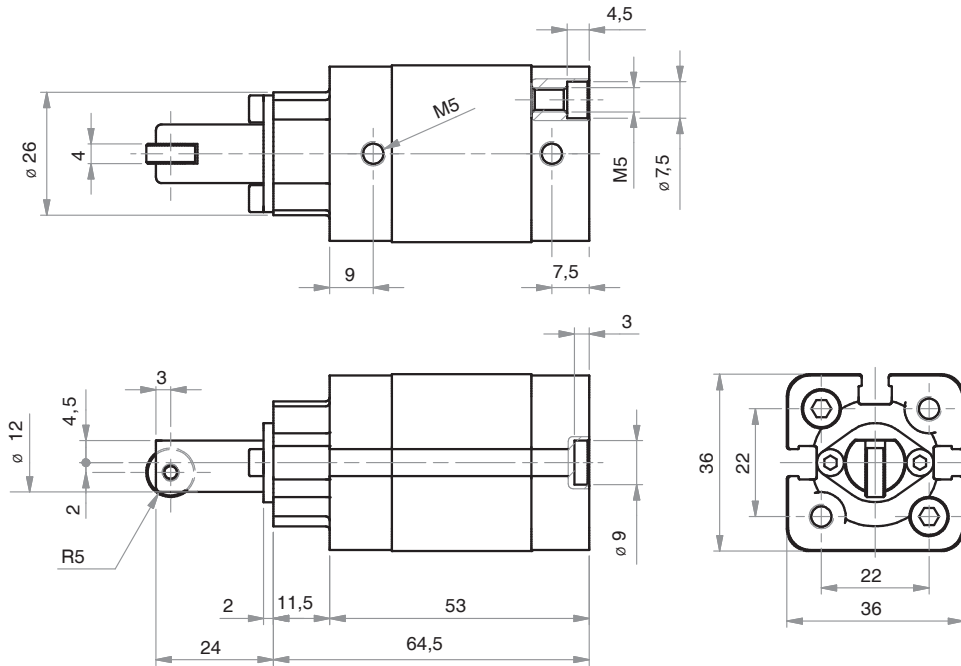
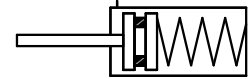


**PST-R**

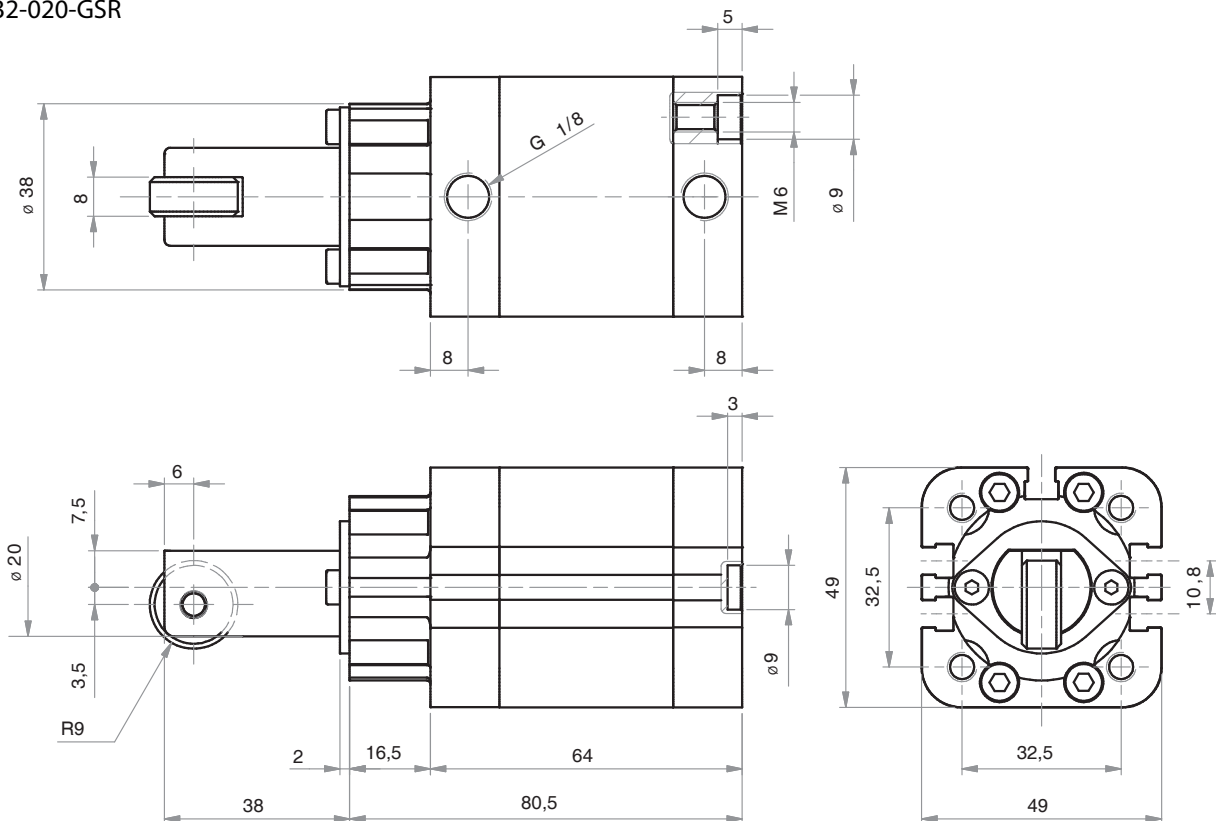
**TIGE AVEC ROULEMENT**

**ROD WITH ROLLER**

PST020-015-GSR



PST032-020-GSR

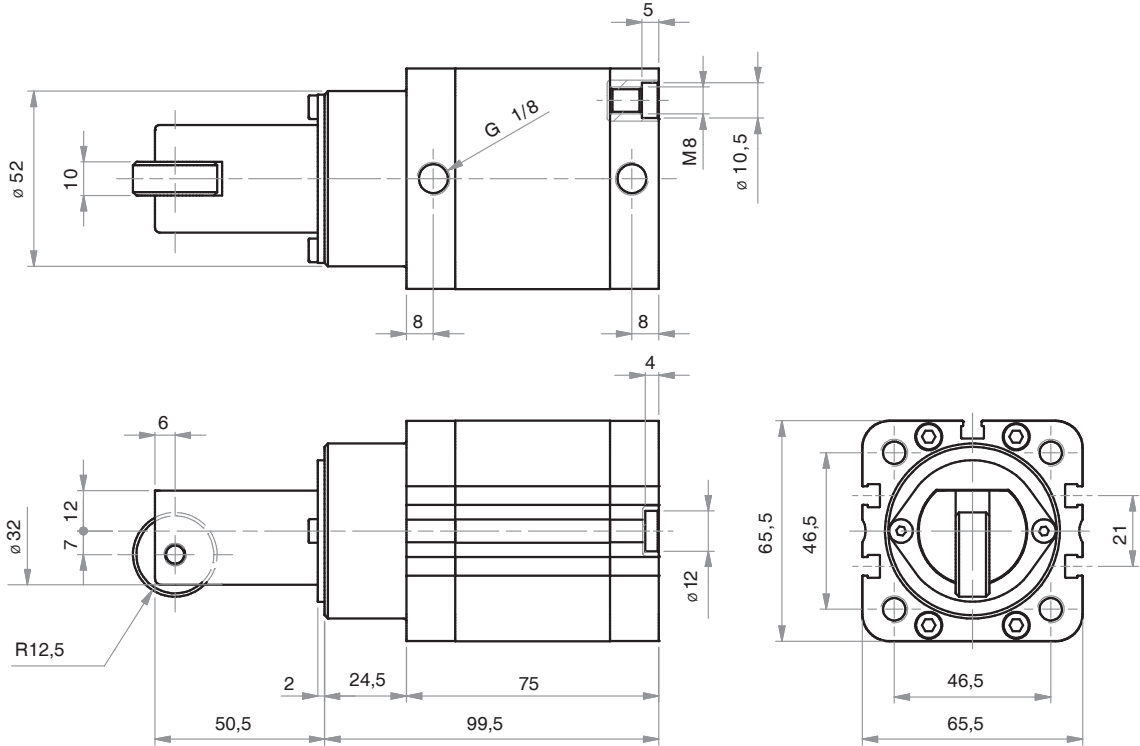
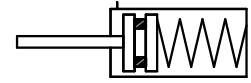


TIGE AVEC ROULEMENT

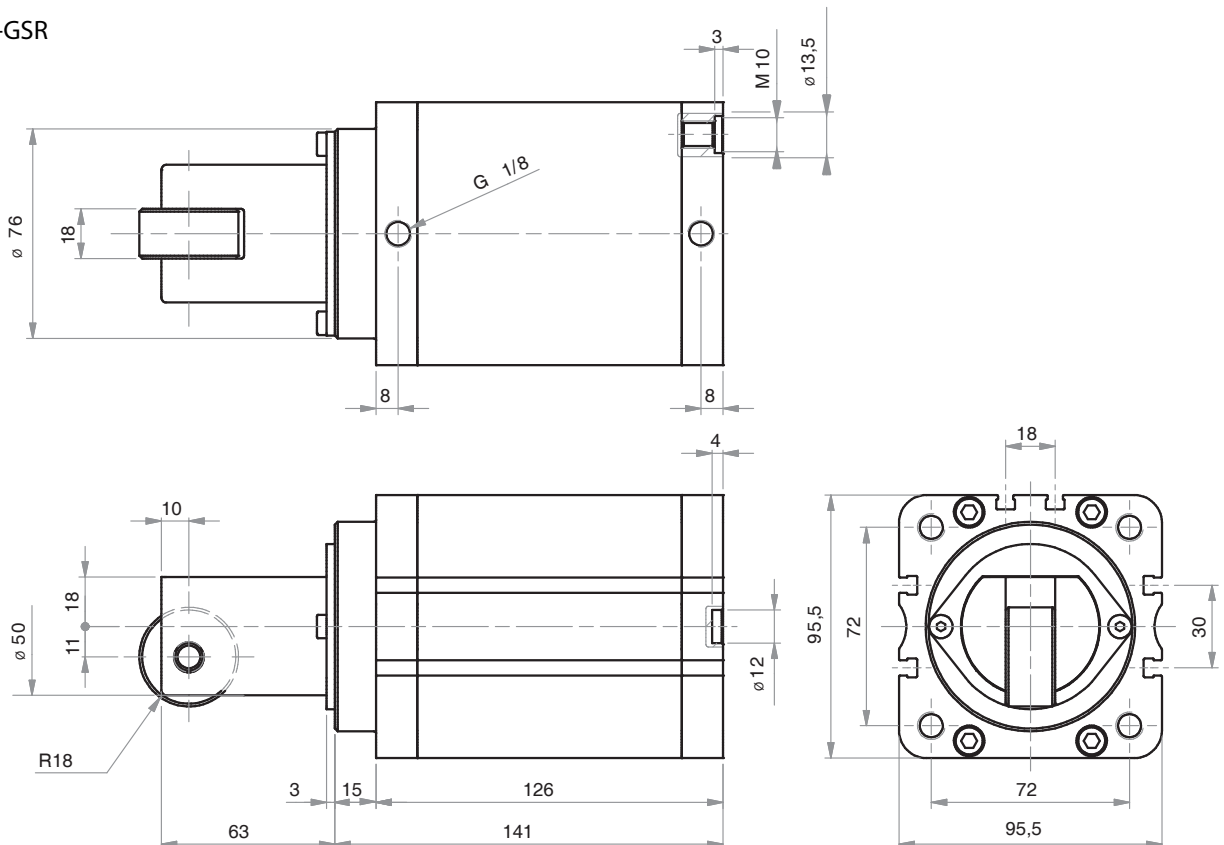
PST-R

ROD WITH ROLLER

PST050-030-GSR



PST080-030-GSR



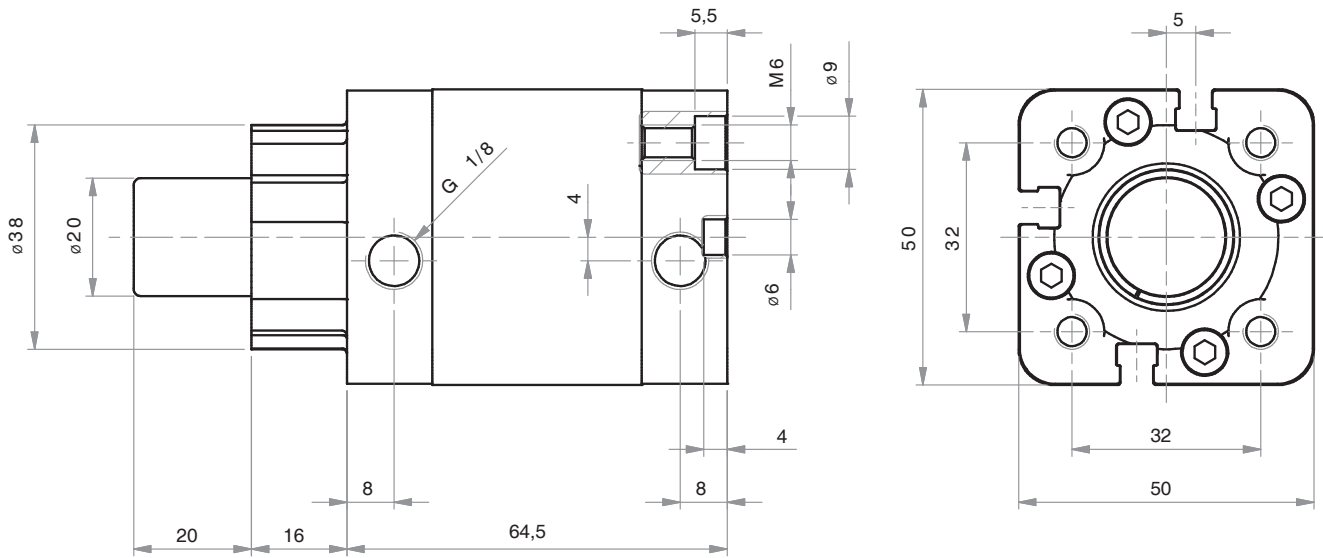


TIGE LISSE

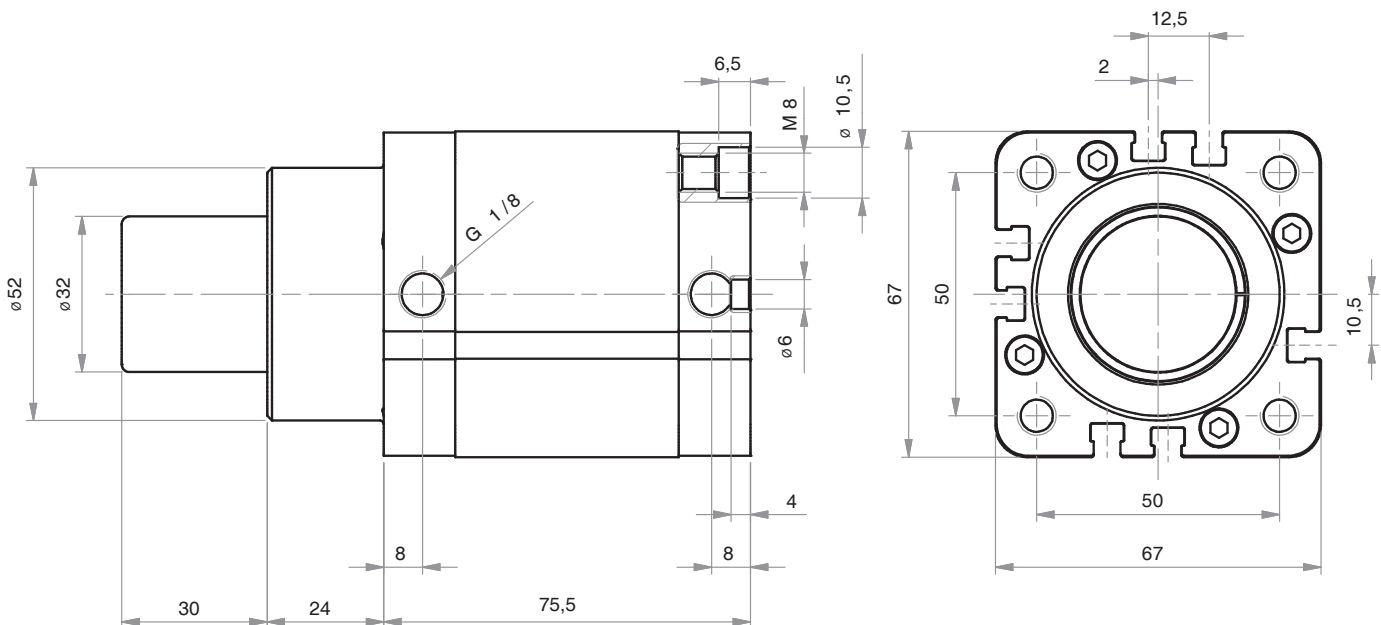
SMOOTH ROD

AST-L

AST032-020-GSL



AST050-030-GSL

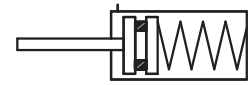
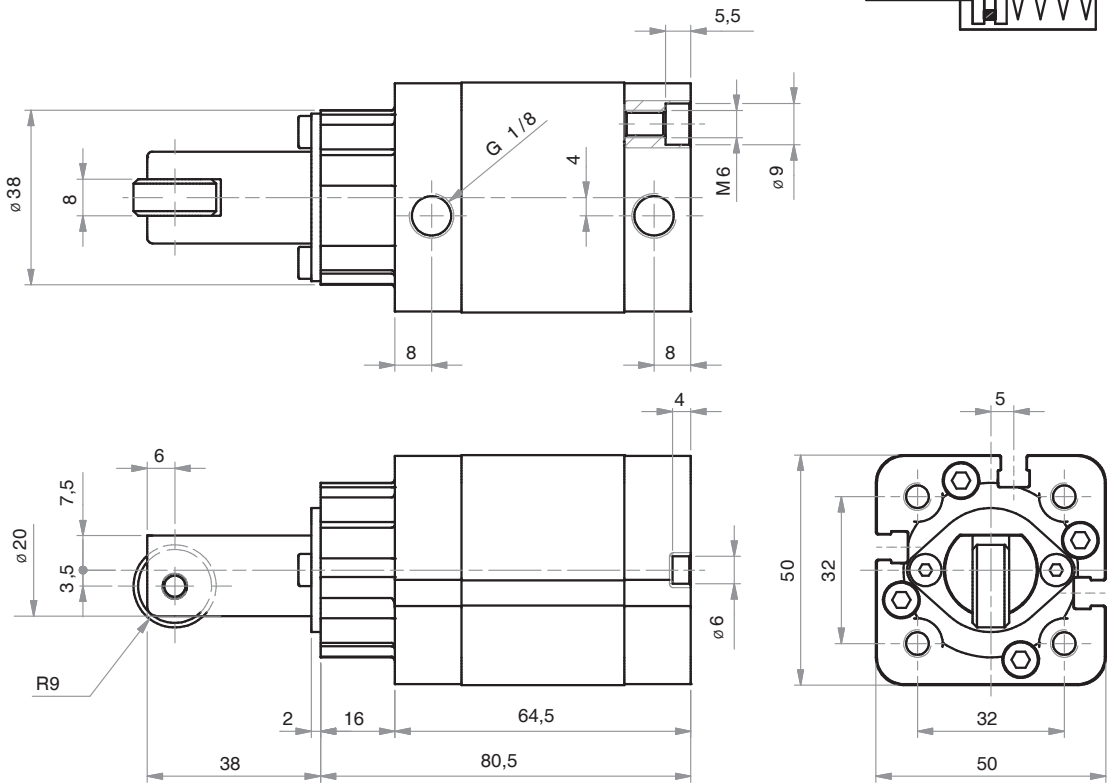


**AST-R**

**TIGE AVEC ROULEMENT**

**ROD WITH ROLLER**

AST032-020-GSR



AST050-030-GSR

