

SERIE

U

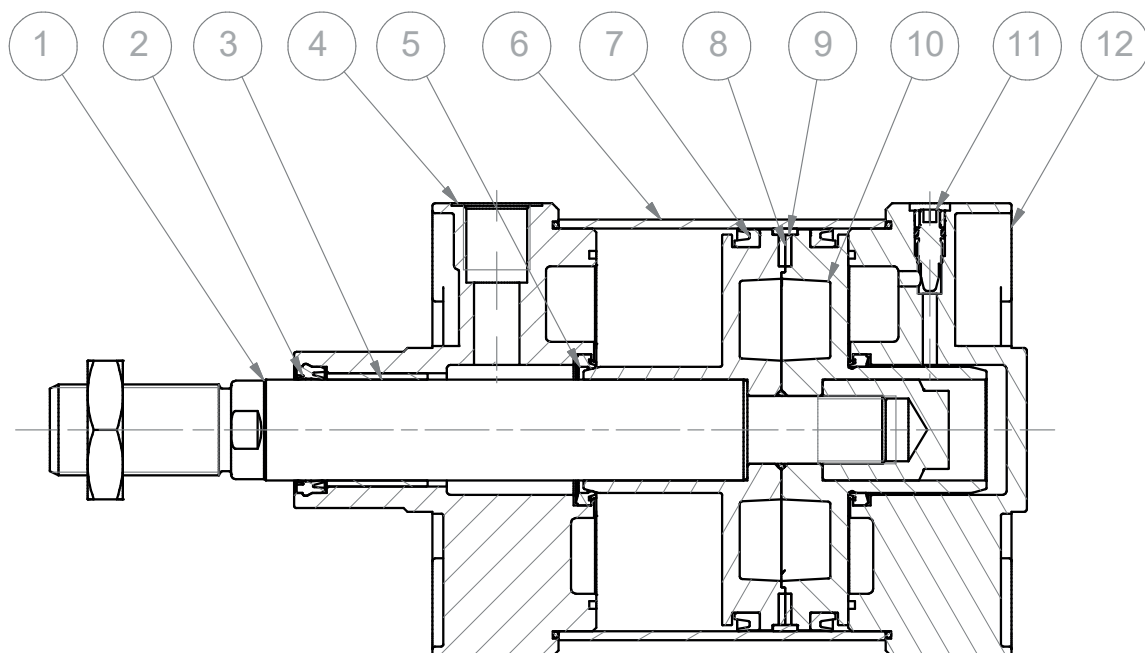
VÉRIN ISO 1552
ISO 1552 CYLINDERS

CARACTÉRISTIQUES TECHNIQUES - TECHNICAL CHARACTERISTICS


Pression d'utilisation Working pressure	1 ÷ 10 bar (double effet - double acting)
Température d'utilisation Working temperature	0 ÷ +80°C (-20°C avec air sec - with dry air) 0 ÷ +150°C (avec joints hautes températures - with high temperature seals)
Version - Versions	simple effet, double effet, tige passante - double acting - double rod - tandem
Alésage - Bores	ø 160 - 200 - 250 - 320
Course- Strokes	voir table des courses standards - see standard stroke tables
Fluide - Fluid	air comprimé filtré, non lubrifié - compressed filtered, non lubricated air

CONSTRUCTION - CONSTRUCTIVE CHARACTERISTICS

①	Tige - Rod	acier chromé C45 - C45 Chromed steel
② ⑤ ⑦	Joints - Seals	poliuréthane - NBR - polyurethane - NBR
③	Cartouche guide - Bush	ø 160 - 200 bronze fritté - sintered bronze ø 250 - 320 acier + PTFE - steel+PTFE
④ ⑫	Flasques - Covers	aluminium coulé peint - painted die cast aluminium
⑥	Tube - Tube	aluminium anodisé - anodized aluminium
⑧	Aimant - Magnet	plastoferrite - rubber magnet
⑨	Bague de guidage - Guide ring	PBT + PTFE
⑩	Piston - Piston	aluminium coulé - die cast aluminium
⑪	Amortissement - Cushioning	acier nickelé - nickel-plated steel
	Tirant - Tie rod	acier inox AISI 304 - AISI 304 stainless steel
	O-ring	NBR



CODIFICATION
KEY CODE

U		D		M		1 6 0 . 5 0 0 .		G S .		M	
						ALÉSAGE - BORE (Ø) 160-200-250-320		COURSE - STROKE (mm) voir table des courses std see std stroke tables		OPTION - OPTION EX ATEX  II 2GD c T4	
				VERSION - VERSION P tige passante double rod						OPTION - OPTION C1 CICT monté CICT mounted	
				VERSION - VERSION M magnétique magnetic				JOINTS - SEALS		OPTION - OPTION W sans amortissement without cushioning	
				non magnétique non-magnetic				joints standards standard seals		WR sans amortissement arrière without rear cushioning	
				VERSION - VERSION D double effet double acting				joints de tige hautes températures high temperature rod seal		WF sans amortissement avant without front cushioning	
								tous les joints hautes températures all seals for high temperature		OPTION - OPTION X4 tige chromé inox AISI 304 chromed AISI 304 SS rod	
								joint de tige E8 E8 rod seal			
SÉRIE - SERIES		U tube cylindrique avec tirants round tube with tie rods						joint de tige EW (racleur métallique) EW rod seal (metal scraper)		TIGE - ROD F femelle female	
										M mâle male	

SUR DEMANDE - ON REQUEST

Filetage spécial (écrou non fourni) - Special thread (without rod nut)

Tige rallongée (WH) - Extended rod (WH)

Course non standard - Special stroke

Courses jusqu'à 2700 mm - Strokes up to 2700 mm

 ATEX  II 2GD c T4

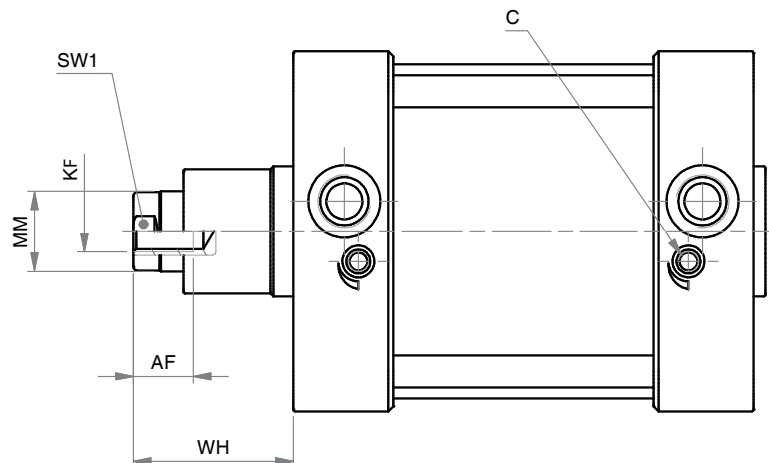
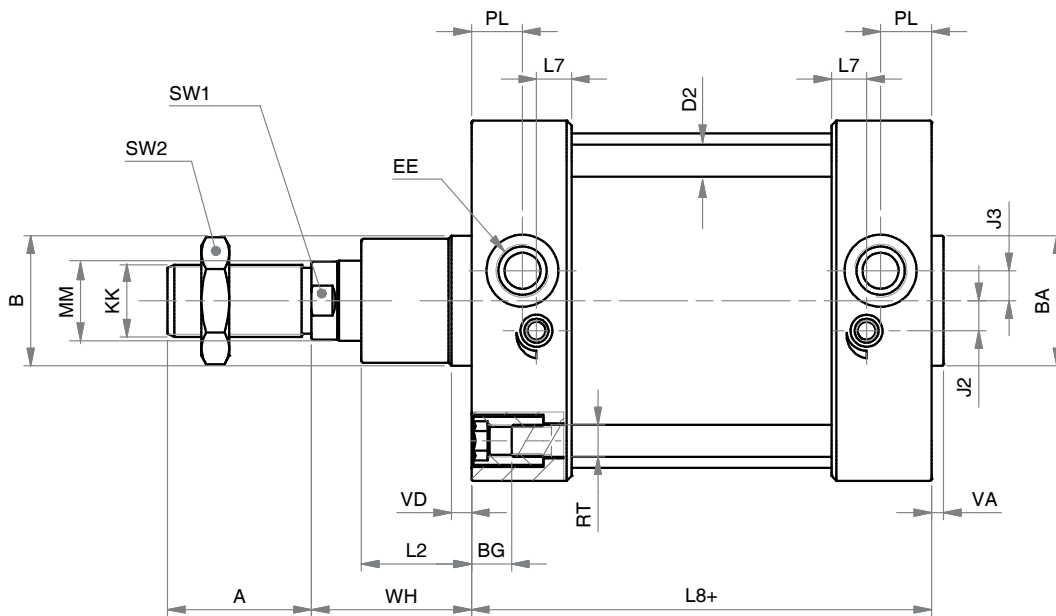
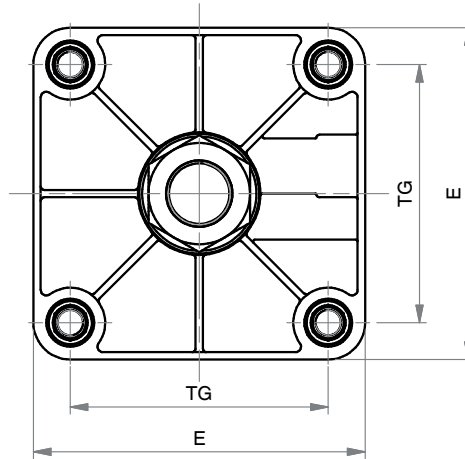
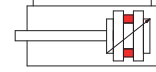
FORCES THÉORIQUES (P=6 bar)
THEORETICAL FORCES (P=6 bar)

			Ø	160	200	250	320
UDM	POUSSÉE	THRUST	[N]	12.064	18.850	29.450	48.250
	TRACTION	TRACTION	[N]	11.310	18.096	29.470	46.380
UDMP	POUSSÉE	THRUST	[N]	11.310	18.096	29.470	46.380
	TRACTION	TRACTION	[N]	11.310	18.096	29.470	46.380

UDM

DOUBLE EFFET MAGNÉTIQUE AMORTI

DOUBLE ACTING MAGNETIC CUSHIONED



C = VIS DE RÉGLAGE DE L'AMORTISSEMENT - C = CUSHIONING ADJUSTMENT SCREW

DOUBLE EFFET MAGNÉTIQUE AMORTI
UDM
DOUBLE ACTING MAGNETIC CUSHIONED
DIMENSIONS - DIMENSIONS

∅	160	200	250	320
A	72	72	84	96
AF	30	30	40	50
∅B	65	75	90	110
∅BA	65	75	90	110
BG	24	24	25	28
∅D2	16	16	20	25
E	180	220	270	350
EE	G3/4"	G3/4"	G1"	G1"
J2	15	15	25	35
J3	15	15	25	35
KF	M20	M20	M24	M30
KK	M36x2	M36x2	M42x2	M48x2
L2	55	65	75	90
L7	17,5	16	20	20
L8+	180	180	200	220
∅MM	40	40	50	63
PL	25,5	25,5	30	30
RT	M16	M16	M20	M24
SW 1	36	36	46	55
SW 2	55	55	65	75
TG	140	175	220	270
VA	6	8	8	10
VD	10	25	25	25
WH	80	95	105	120
*	45	45	45	45

+ = longueur de course - stroke length

* = longueur d'amortissement - cushioning length

Note: écrou de tige inclu

Note: rod nut included in the supply

∅ COURSES STANDARDS - STANDARD STROKES

160	25 - 50 - 80 - 100 - 125 - 150 - 160 - 200 - 250 - 300 - 320 - 400 - 450 - 500 - 550 - 600 - 650 - 700 - 750 - 800 - 850 - 900 - 950 - 1000
200	25 - 50 - 80 - 100 - 125 - 150 - 160 - 200 - 250 - 300 - 320 - 400 - 450 - 500 - 550 - 600 - 650 - 700 - 750 - 800 - 850 - 900 - 950 - 1000
250	25 - 50 - 80 - 100 - 125 - 150 - 160 - 200 - 250 - 300 - 320 - 400 - 450 - 500 - 550 - 600 - 650 - 700 - 750 - 800 - 850 - 900 - 950 - 1000
320	25 - 50 - 80 - 100 - 125 - 150 - 160 - 200 - 250 - 300 - 320 - 400 - 450 - 500 - 550 - 600 - 650 - 700 - 750 - 800 - 850 - 900 - 950 - 1000