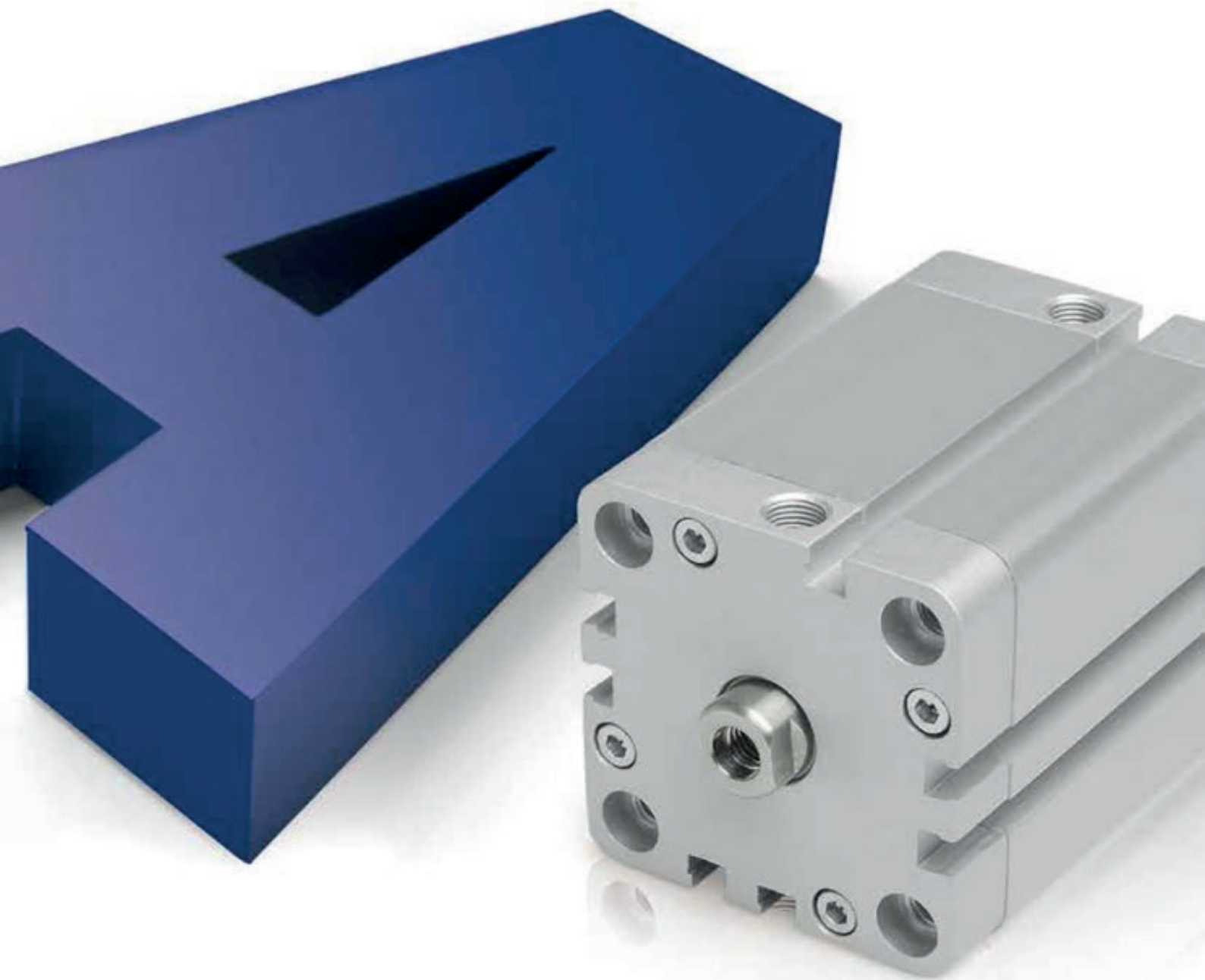


VÉRIN COMPACT UNITOP SIMPLE EFFET RESSORT ARRIÈRE - ASEM



SÉRIE

A

VERIN COMPACTS UNITOP
UNITOP COMPACT CYLINDERS

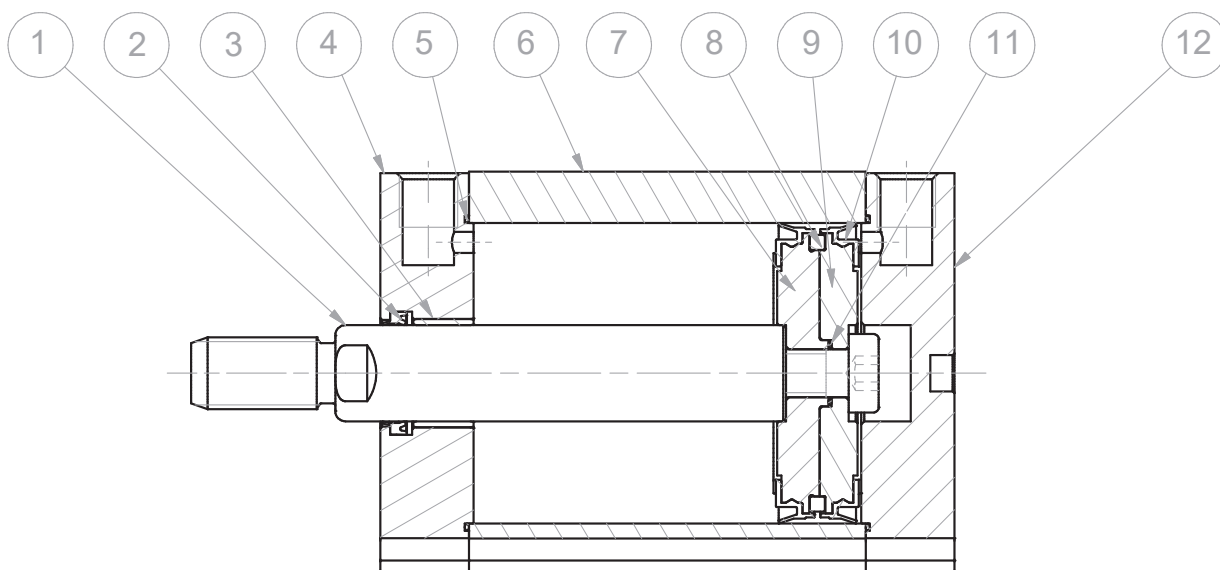
VÉRIN COMPACT UNITOP SIMPLE EFFET RESSORT ARRIÈRE - ASEM

CARACTERISTIQUES TECHNIQUES - TECHNICAL CHARACTERISTICS


Pression de travail <i>Working pressure</i>	1 ÷ 10 bar (double effet - <i>double acting</i>) 2 ÷ 10 bar (simple effet - <i>single acting</i>)
Plage de température <i>Working temperature</i>	0 ÷ +80°C (-20°C avec air sec - <i>with dry air</i>) 0 ÷ +150°C (avec joints hautes températures - <i>with high temperature seals</i>)
Versions - Versions	simple effet - double effet - anti-rotation - tige traversante <i>single acting - double acting - anti-rotation - double rod</i>
Alésage - Bores	Ø 12 - 16 - 20 - 25 - 32 - 40 - 50 - 63 - 80 - 100
Course - Strokes	voir tableau des courses standards - <i>see standard stroke tables</i>
Fluide - Fluid	aria compressa, filtrata, non lubrificata - <i>compressed air, filtered, no lubrication</i>

CARACTERISTIQUES DE FABRICATION - CONSTRUCTIVE CHARACTERISTICS

①	Tige - Rod	acier inox AISI 303 - <i>stainless steel AISI 303</i>
② ⑩	Joints - Seals	polyuréthane - <i>polyurethane</i>
③	Cartouche guide - Bush	acier+PTFE - <i>steel+PTFE</i>
④ ⑫	Testate - Covers	aluminium anodisé - <i>anodized aluminium</i>
⑤ ⑪	O-ring	NBR
⑥	Tube - Tube	aluminium anodisé - <i>anodized aluminium</i>
⑦ ⑨	Piston - Piston	aluminium - <i>aluminium</i>
⑧	Aimant - Magnet	Ø 12 ÷ 50 Néodyme - <i>neodymium alloy</i> Ø 63 ÷ 100 plastoferrite - <i>rubber magnet</i>
	Vis - Screws	acier - <i>steel</i>
	Ressort - Spring	acier - <i>steel</i>
	Amortisseur - Bumper	polyuréthane - <i>polyurethane</i>



VÉRIN COMPACT UNITOP SIMPLE EFFET RESSORT ARRIÈRE - ASEM
CODIFICATION
KEY CODE

A S E M			0 5 0 . 0 3 0 . G S . F		
			ALÉSAGE - BORE (Ø)	COURSE - STROKE (mm)	OPTIONE - OPTION
			012-016-020-025-032 040-050-063-080-100	voir table des courses stds see std stroke tables	EX ATEX  II 2GD cT4
			VERSION - VERSION		TIGE - ROD
			A avec plaque anti-rotation with anti-rotation bracket		F femmina female
			VERSIONE - VERSION		M maschio male
			P tige traversante double rod		
			VERSION - VERSION		JOINTS - SEALS
			M magnétique magnetic		GS joints standards standard seals
			non magnétique non-magnetic		VR joint de tige hautes températures high temperature rod seal
			VERSION - VERSION		VA tous les joints hautes températures all seals for high temperature
			S simple effet ressort avant single acting front spring		
			SE simple effet ressort arrière single acting rear spring		
			D double effet double acting		
			SERIE - SERIES		
			A tube profilé avec encoche pour capteurs tube with slots for sensors		

SUR DEMANDE - ON REQUEST

Tige creuse - Hollow rod

Tige rallongée (W) - Extended rod (W)

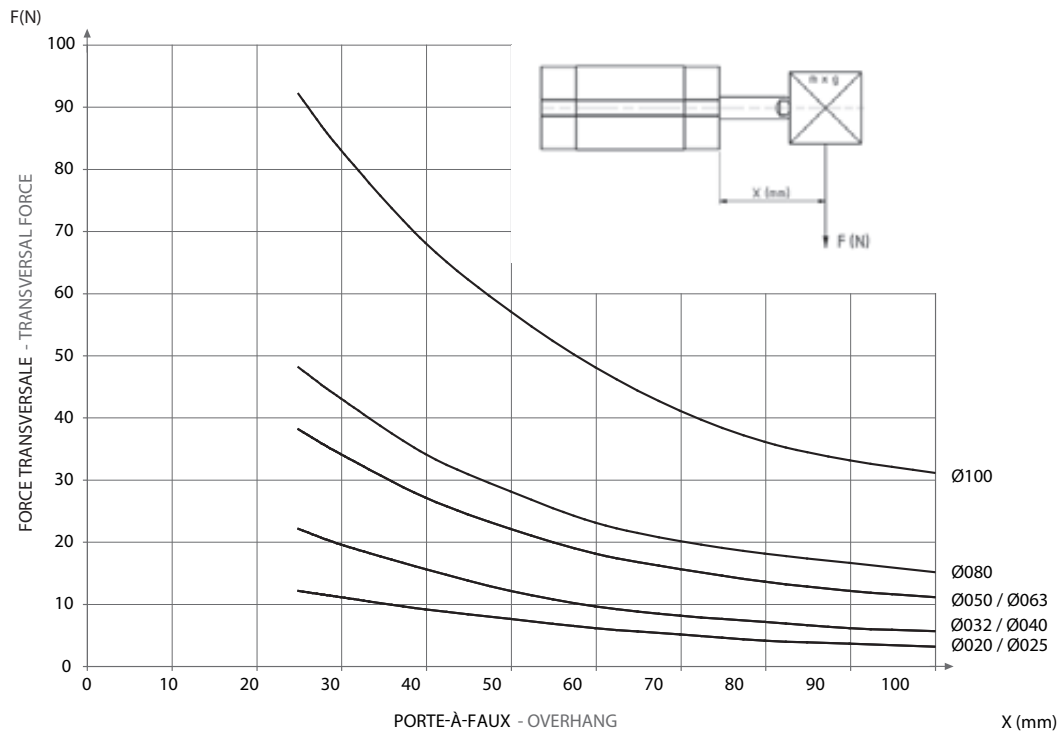
Filetage spécial (dado stelo non fornito) - Special thread (without rod nut)

 ATEX  II 2GD c T4

VÉRIN COMPACT UNITOP SIMPLE EFFET RESSORT ARRIÈRE - ASEM

DIAGRAMME DES CHARGES ADMISSIBLES

APPLICABLE LOAD



Vérin compact UNITOP simple effet ressort arrière magnétique

ASEM		COURSE - STROKE [mm]									
ø [mm]		5	10	15	20	25	30	35	40	50	60
12	C [N]	24	24	24	24	24	24	38	38	38	38
	R [N]	22	20	18	16	14	12	24	22	18	14
16	C [N]	24	24	24	24	24	24	38	38	38	38
	R [N]	22	20	18	16	14	12	24	22	18	14
20	C [N]	46	46	46	46	46	46	58	58	58	58
	R [N]	41	37	32	27	23	18	32	28	21	13
25	C [N]	41	41	41	41	41	41	41	41	41	41
	R [N]	38	35	32	29	26	23	26	24	20	16
32	C [N]	53	53	53	53	53	53	96	96	96	96
	R [N]	50	46	42	38	35	31	63	59	49	40
40	C [N]	71	71	71	71	71	71	96	96	96	96
	R [N]	66	61	55	50	45	40	63	59	49	40
50	C [N]	68	68	68	68	68	68	154	154	154	154
	R [N]	63	58	53	47	42	37	108	101	88	75
63	C [N]	96	96	96	96	96	96	154	154	154	154
	R [N]	90	84	78	71	65	59	108	101	88	75
80	C [N]	154	154	154	154	154	154	189	189	189	189
	R [N]	148	141	134	128	121	115	124	115	97	79
100	C [N]	190	190	190	190	190	190	293	293	293	293
	R [N]	181	172	163	154	145	136	209	197	173	149

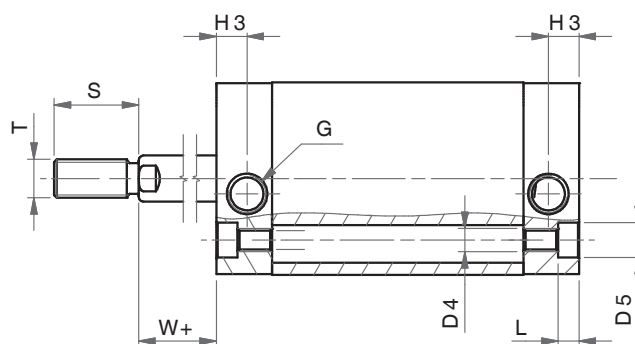
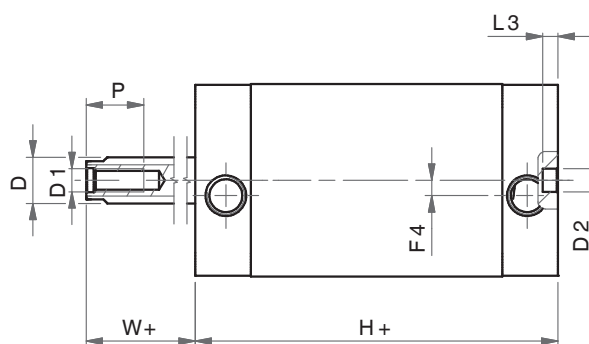
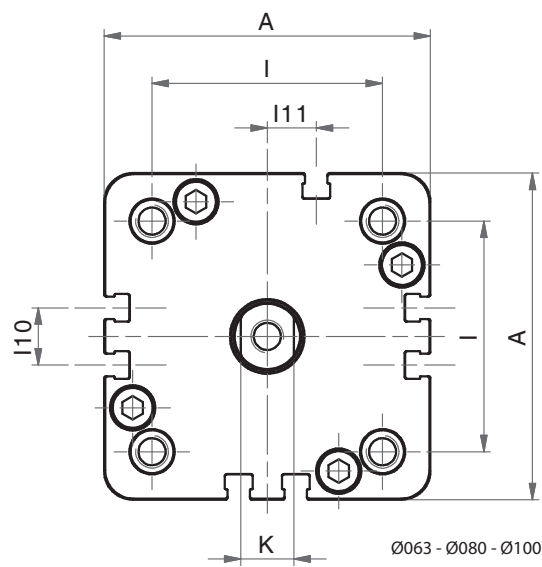
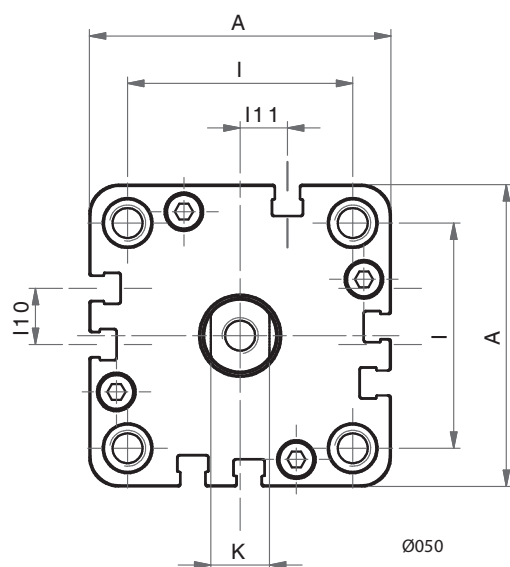
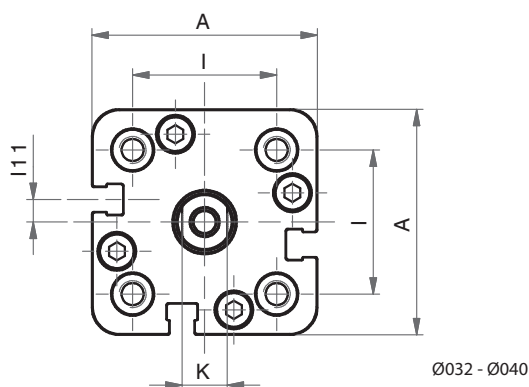
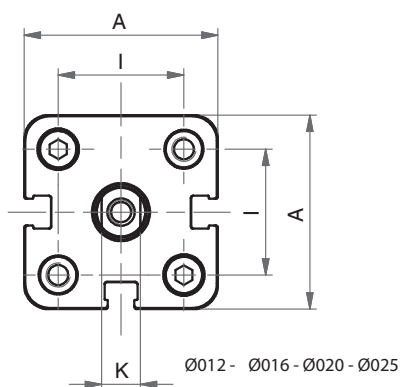
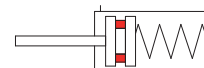
C [N] Charge du ressort comprimé - Load of compressed spring (N)

R [N] Charge du ressort en position de repos - Load of spring in resting position (N)

VÉRIN COMPACT UNITOP SIMPLE EFFET RESSORT ARRIÈRE - ASEM

SIMPLE EFFET MAGNETIQUE - RESSORT ARRIERE

SINGLE ACTING MAGNETIC - REAR SPRING



VÉRIN COMPACT UNITOP SIMPLE EFFET RESSORT ARRIÈRE - ASEM

SIMPLE EFFET MAGNETIQUE - RESSORT ARRIERE

SINGLE ACTING MAGNETIC - REAR SPRING

DIMENSIONS - DIMENSIONS										
Ø	012	016	020	025	032	040	050	063	080	100
A	29	29	36	40	50	58	67	80	100	124
ø D	6	8	10	10	12	12	16	16	20	25
D1	M3	M4	M5	M5	M6	M6	M8	M8	M10	M12
ø D2	6	6	6	6	6	6	6	8	8	8
D4	M4	M4	M5	M5	M6	M6	M8	M10	M10	M10
ø D5	6	6	7,5	7,5	9	9	10,5	13,5	13,5	13,5
F4	-	-	-	-	4	3	-	-	-	-
G	M5	M5	M5	M5	G1/8	G1/8	G1/8	G1/8	G1/8	G1/4
H+	38*	38*	38*	39,5*	44,5*	45,5*	45,5*	50*	56*	66,5*
H3	8	8	8	8	8	8	8	8	8,5	10,5
I	18	18	22	26	32	42	50	62	82	103
I10	-	-	-	-	-	-	12,5	14	18	35
I11	-	-	-	-	5	3	10,5	12	12	17,5
K	5	6	8	8	10	10	13	13	17	22
L	3,5	3,5	4,5	4,5	5,5	5,5	6,5	8,5	8,5	8,5
L3	4	4	4	4	4	4	4	4	4	4
P	8	11	12	12	15	15	17	17	17	22
S	16	20	22	22	22	22	24	24	32	40
T	M6	M8	M10x1,25	M10x1,25	M10x1,25	M10x1,25	M12x1,25	M12x1,25	M16x1,5	M20x1,5
W+	4,5	4,5	4,5	5,5	6	6,5	7,5	7,5	8	10

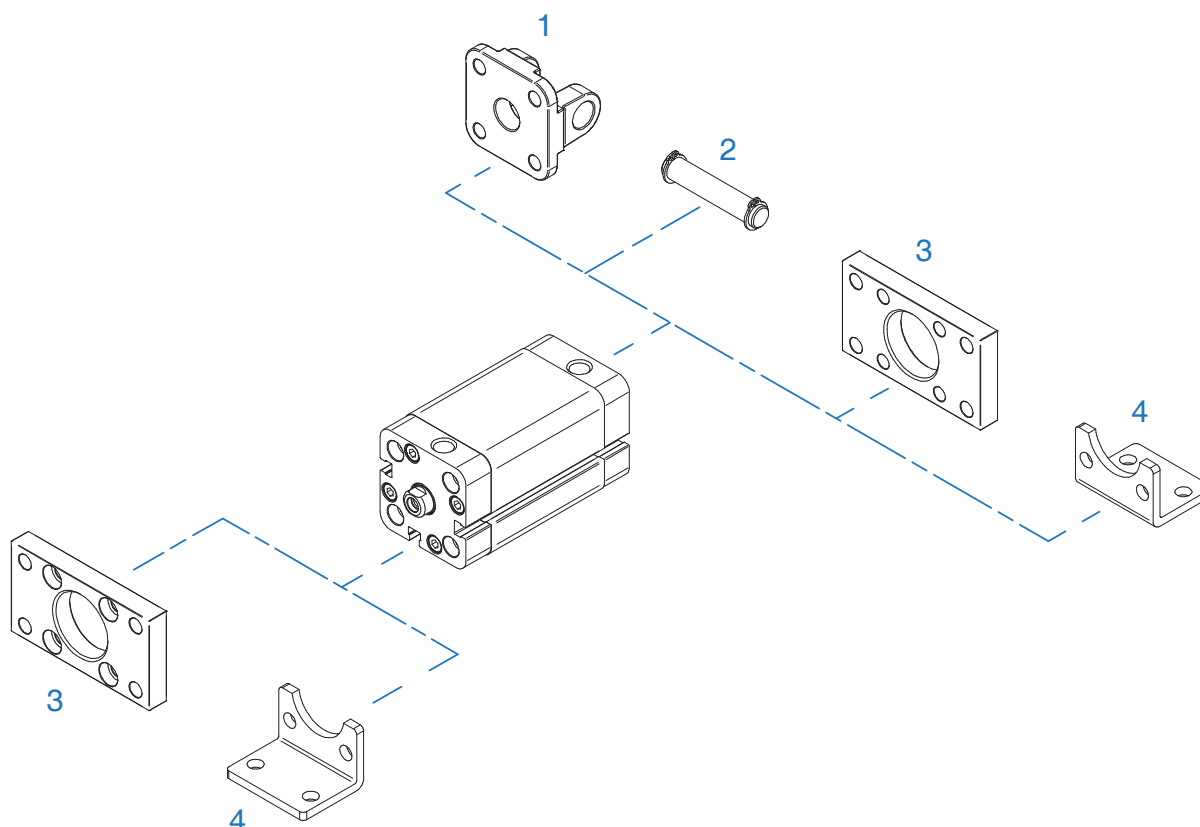
+ = ajouter longueur de course (mm) - add stroke length (mm)

* pour les courses - for strokes 035-040-050-060:

ASEM 012 - 016 - 020 - 025 - 032 - 040 - 050 - 063 ajouter - add : +10 mm

ASEM 080 - 100 ajouter - add : +20 mm

Ø	COURSES STANDARD - STANDARD STROKES
012	5 - 10 - 15 - 20 - 25 - 30 - 35 - 40 - 50 - 60
016	5 - 10 - 15 - 20 - 25 - 30 - 35 - 40 - 50 - 60
020	5 - 10 - 15 - 20 - 25 - 30 - 35 - 40 - 50 - 60
025	5 - 10 - 15 - 20 - 25 - 30 - 35 - 40 - 50 - 60
032	5 - 10 - 15 - 20 - 25 - 30 - 35 - 40 - 50 - 60
040	5 - 10 - 15 - 20 - 25 - 30 - 35 - 40 - 50 - 60
050	5 - 10 - 15 - 20 - 25 - 30 - 35 - 40 - 50 - 60
063	5 - 10 - 15 - 20 - 25 - 30 - 35 - 40 - 50 - 60
080	5 - 10 - 15 - 20 - 25 - 30 - 35 - 40 - 50 - 60
100	5 - 10 - 15 - 20 - 25 - 30 - 35 - 40 - 50 - 60

VÉRIN COMPACT UNITOP SIMPLE EFFET RESSORT ARRIÈRE - ASEM
ACCESSOIRES DE MONTAGE UNITOP
UNITOP MOUNTING PARTS


POS.	CODE	DESCRIPTION - DESCRIPTION
1	CFU---	articulation arrière unitop - unitop female hinge
2	PCF---	axe de fixation pour articulation - pin for hinge
3	FU---	plaque de fixation unitop - unitop flange
4	PBU---	equerre de fixation arrière - unitop foot mounting

Dimensions des accessoires: voir chapitre SERIE W

Accessories dimensions: see SERIE W chapter