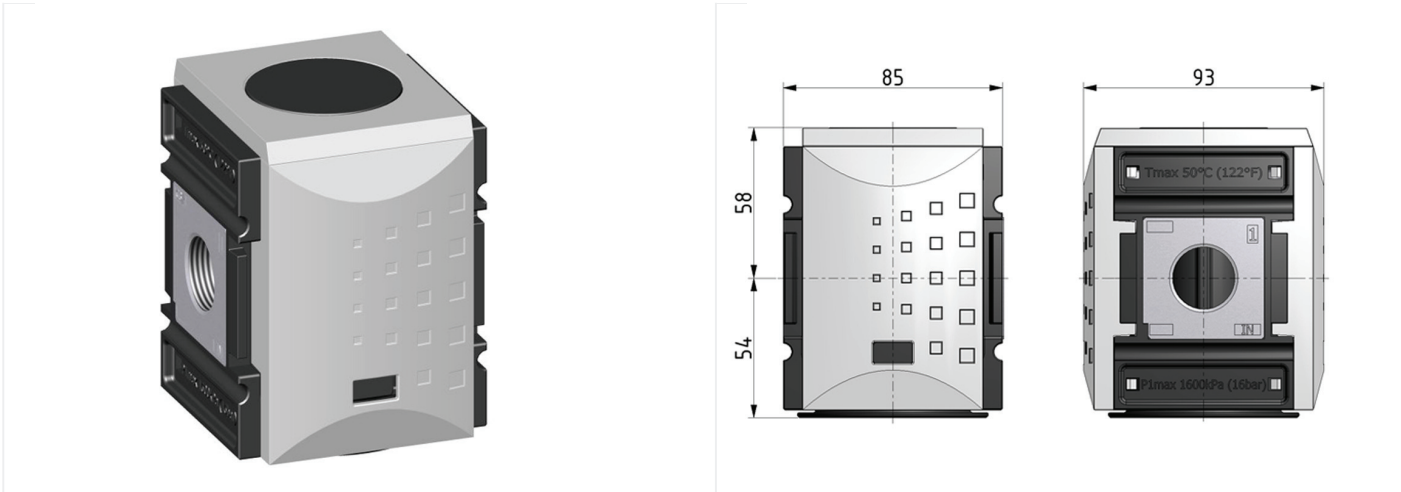


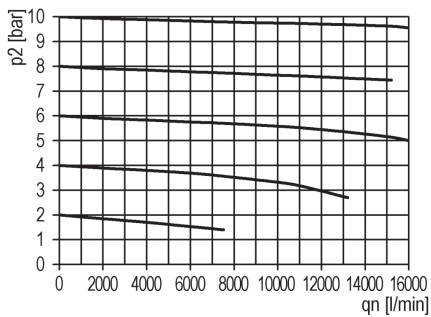
System extensions of the Futura series

Non return valve G3/4

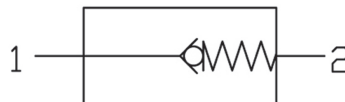


type	article-number	series	port size	weight
KREV-434	94034.FF00	Futura	G 3/4	0.893 kg

flow characteristic



symbol



technical data

- **description:** poppet valve, spring loaded
- **medium:** compressed air, neutral gases
- **supply pressure P1 min.:** 0,4 bar
- **supply pressure P1 max.:** 16 bar
- **temperature range:** 0 - 50°C
- **flow rate 1 => 2:** 16000 l/min

accessories



- mounting bracket:
[KBW 4-1225](#)



- coupling kit wall mounting:
[KKOP 4W](#)