



CE
 ISO9001:2008

Régulateur en ligne MAR300LX

Features

Handle regulator can be fixed with pneumatic tool directly . It can regulate pressure according to application in order to control the outlet of pneumatic tools.

1, Light and smart

Easy to bring without knob and aluminum alloy body (about 80g).

2, Works without gauge

The outlet pressure can be marked by the scale of the twisting button and with lock, to avoid any unexpected twisting.

3, Pressure could be regulated easily and speedly

With special structure of twisting button to regulate easily and speedly within one circle.

4 Outlet pressure could be exhausted

As a complete regulator including exhausting system, outlet pressure can be exhausted by revolution



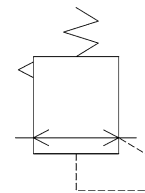
▲ Max.pressure is 1.5MPa

▲ Two standard for inlet port

Ordering Code

MAR300LK	8A	15K
Series	Tube Port	Inlet Pressure
	8A : PT1/4	Blank : 0~10Kgf/cm ² 15K : 0~15Kgf/cm ²

Symbol

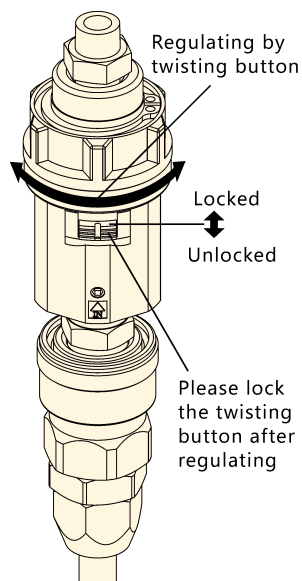


Specification

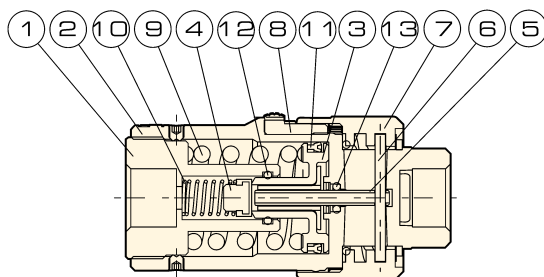
Model	MAR300LK	Model	MAR300LK
Tube Port	8A	Proof Pressure	37.5Kgf/cm ² (3.75Mpa)
Tube Port Size	PT1/4	Fixed Pressure Range	3~9Kgf/cm ² (0.3~0.9Mpa)
Operation Fluid	Air	Abient temperature	0~+60°C (No freeze)
Operating Pressure Range	0~10Kgf/cm ² (0~1.0MPa)	Weight	80g
	15K : 0~15Kgf/cm ² (0~1.5Mpa)		

Pressure Regulating Method

- Within 1.0MPa : Common Factory
- Within 1.5MPa : Auto repair Factory



Parts



Item	Name	Material	Item	Name	Material
1	Body #1	Aluminium	8	Twisting button	Plastic
2	Body #2	Aluminium	9	Adjust spring	Steel Slander
3	Piston	Plastic	10	Air valve spring	Stainless steel
4	Air valve	NBR/Brass alloy	11	Piston seal ring	NBR
5	Adjust Rod	Brass alloy	12	O ring	NBR
6	Parallel Pin	45# steel	13	O ring	NBR
7	Twisting button	Plastic			

Overall Dimension

